



Butt weld Fittings Made in Italy

# Stradella Plant



# Overview as a Manufacturer:

**PRODUCT**

**BUTT WELD FITTINGS**

**MATERIAL**

**CARBON AND LOW ALLOY STEEL**

**HIGH YIELD CARBON STEEL**

**STAINLESS STEEL**

**DUPLEX – SUPER DUPLEX**

**NICKEL ALLOYS**

**CLAD MATERIAL**

**SIZE**

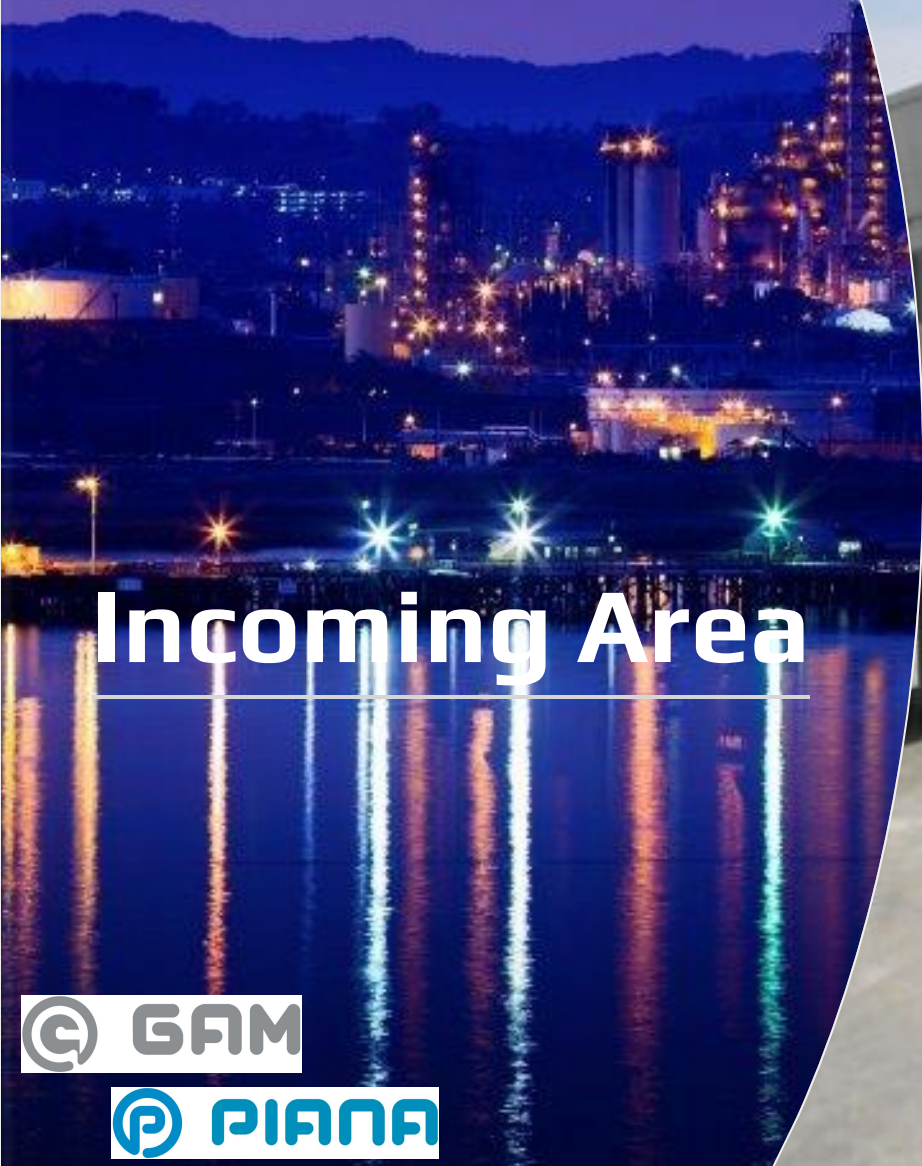
**From 1/2" up to 102" and special pieces  
according to customers' drawings .**

**WALL THICKNESS**

**'No limitation in Wth.'**

# Main features of our production facility

- 100% self-sufficient
- 100% Built in House
- Taylor made
- Updated Technologies
- Covering the complete size range
- Every single phase is controlled
- Internal Execution of NDT, X.ray, PMI, UT, Mt etc.



# Incoming Area





# Cutting Dept.





# Forging Dept. Mandrel elbows





# Forging Dept. Hot forming







# Welding Dept.



# Cutting ends and Sandblasting





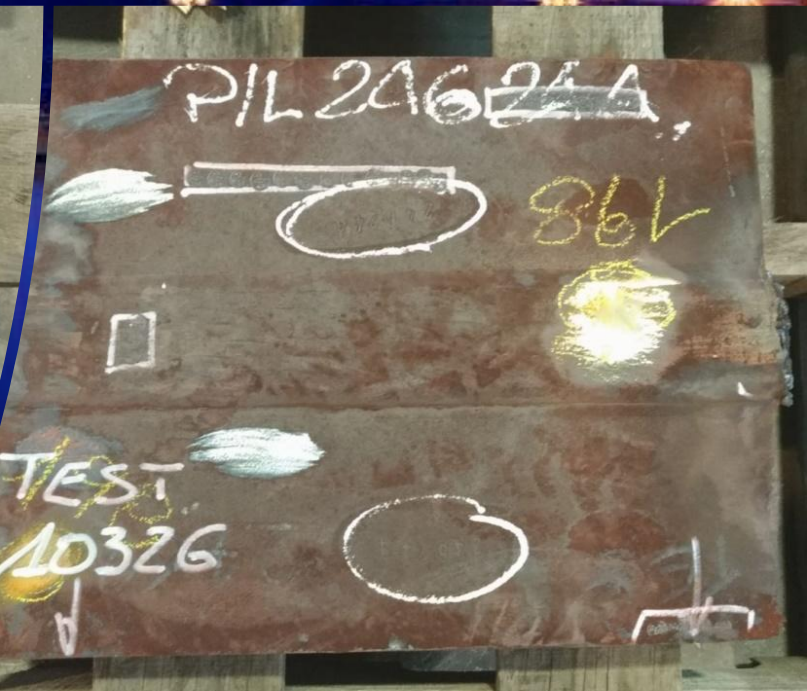
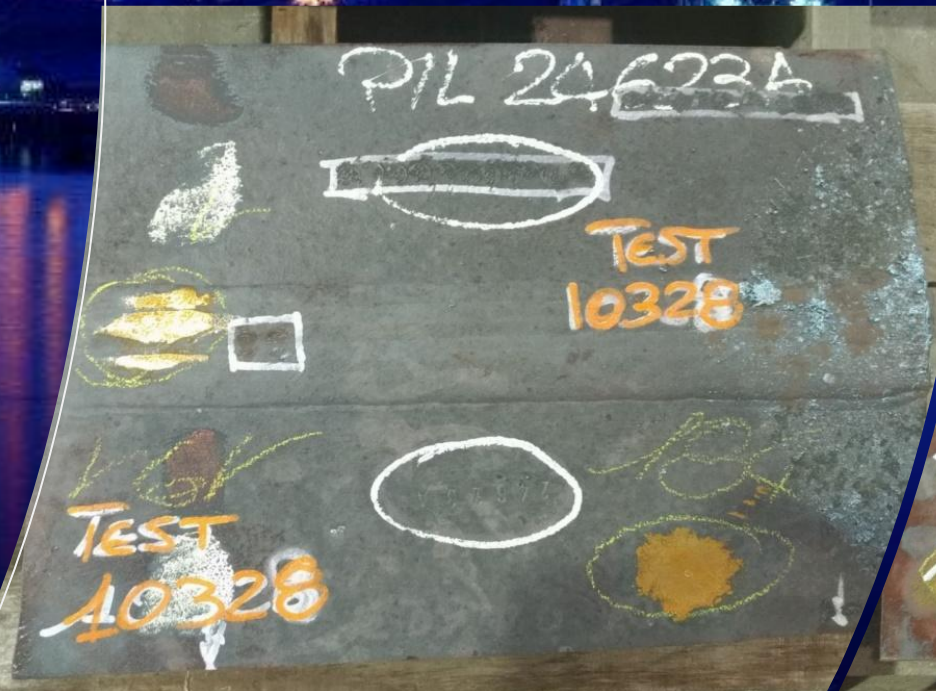
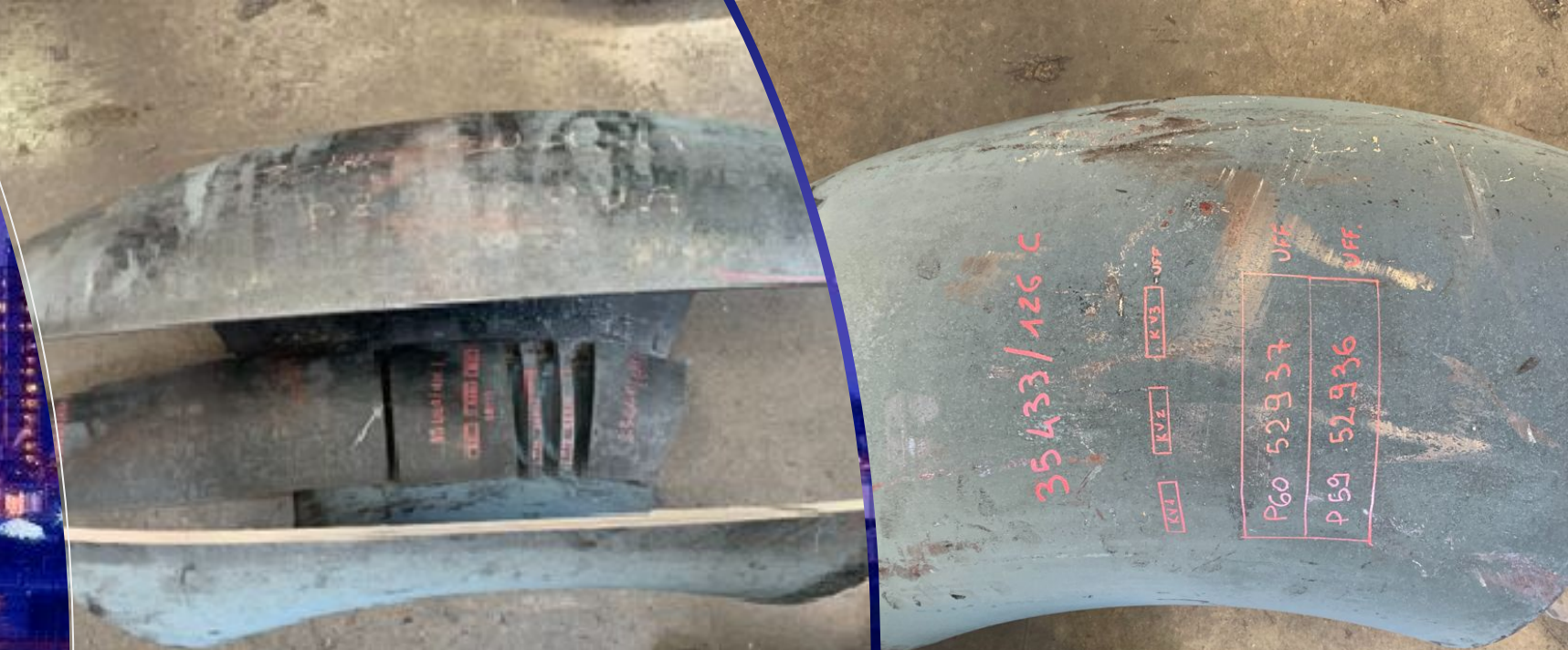
# Heat Treatment Dept.

New large furnaces completely automatized





# Sampling Test coupons





# X-ray Dept.





# Machining Dept.

New machine completely  
automatized



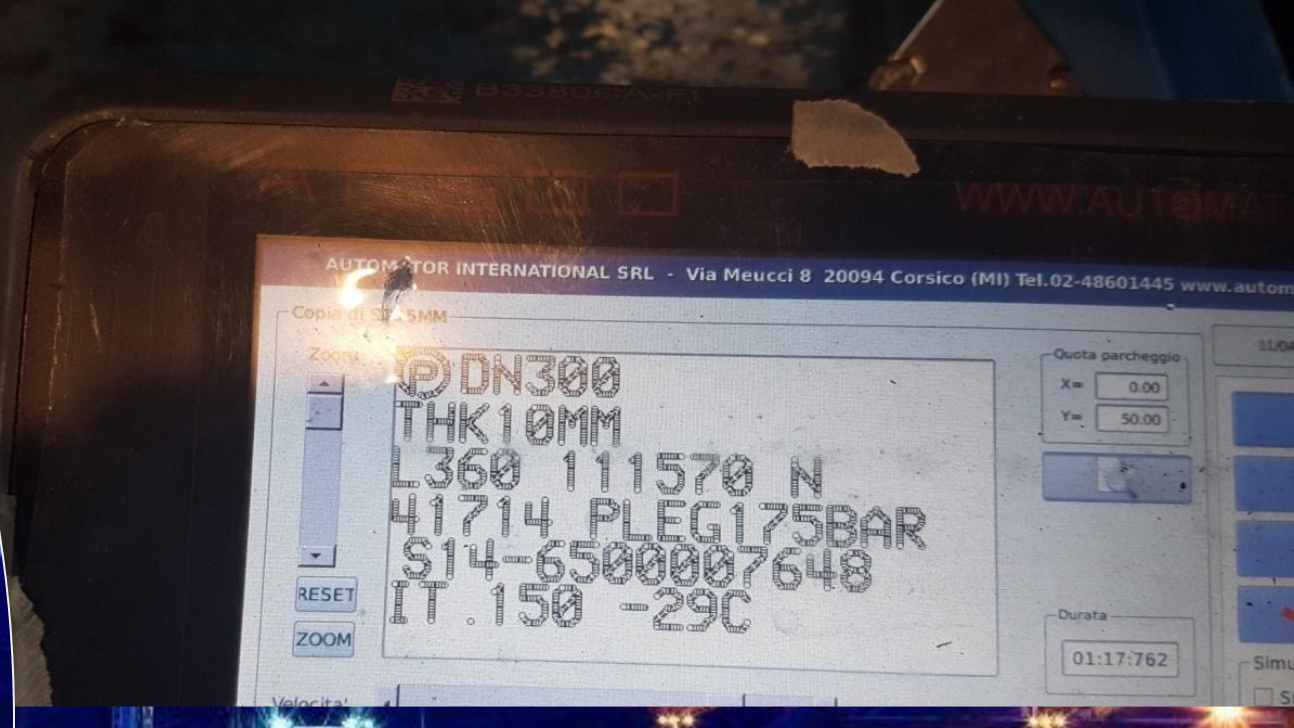


**NDT Dept.**

**Dye penetrant test**



# Marking Dept.

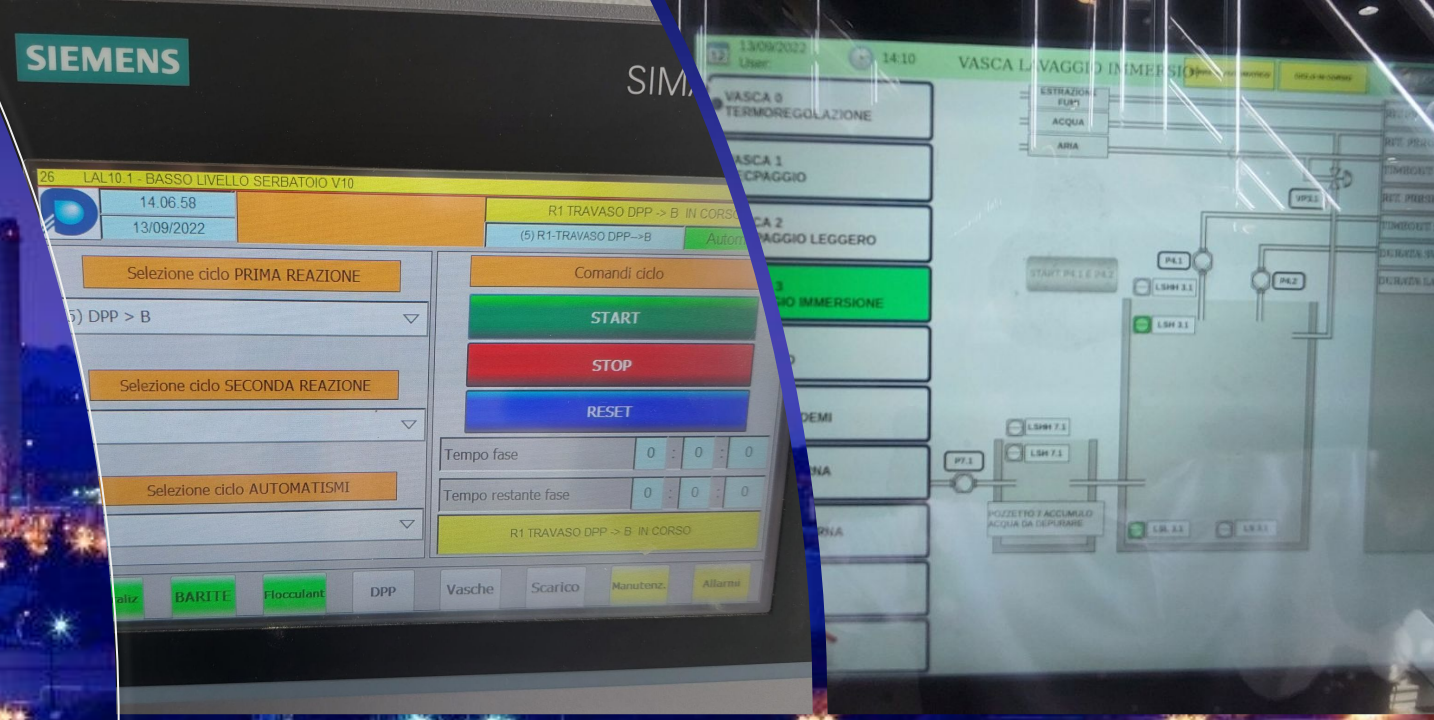






# Coating Dept.





# Pickling & Passivation Dept.





# Inspection Dept.



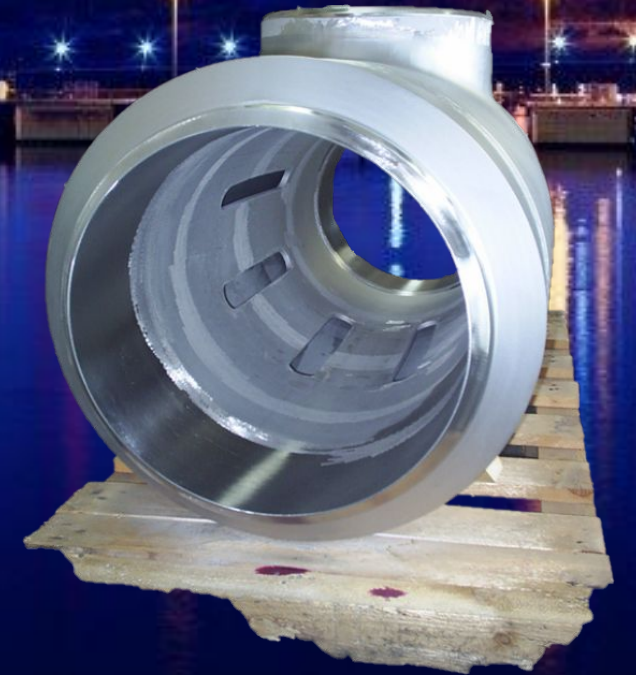


# Packing Dept.



# Special Products





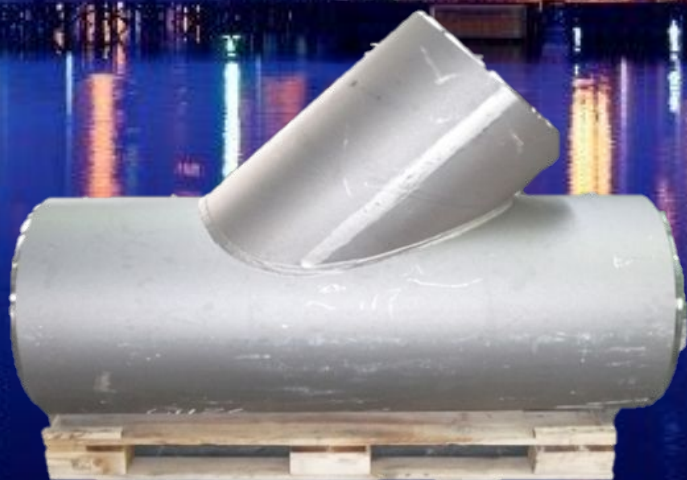
## Flow Tee & SphereTees



**Barred Tee**



**Piggable Tee**



**Lateral Tee**



**Y pieces**





Suction bells with miter bends



Suction Bell with reduced elbow



**Manifold**



**Big sizes**